

Wireless Remote Foot Control

Quick Specs



Industrial Applications

Manufacturing
Fabrication
Plant maintenance

Processes

TIG (GTAW)
Pulsed TIG (GTAW-P)

Operating Range

90 ft. (27.4 m)

Communication 2.4 Ghz radio frequency (ISM band)

Input Power **Transmitter:** (3) AA batteries
Receiver: Miller 14-pin receptacle

Weight 3.16 lb. (1.43 kg)

Improves productivity and maneuverability by eliminating cord tangles. Reduces clean up time and work area cord clutter.

Improves safety by eliminating control cord and reducing potential trip hazard.

Improves reliability by eliminating control cord failure.

Multiple frequency sharing allows up to 20 systems to operate in a 90-foot (27.4 m) radius with accuracy and precision — and without delay, system interference, or crosstalk.

Easy-to-install receiver plugs directly into the 14-pin receptacle of Miller machines. See chart on page 2.

Easily programmable. Control can be quickly and easily paired with any other Miller 14-pin wireless receiver. (Control is preprogrammed when purchased with the receiver.)



Comes complete with:

- Wireless foot control transmitter
- Wireless 14-pin receiver
- Battery box with three AA batteries
- Four Easy-Glide Wear Pads™
- Owner's manual

Auto on feature extends the battery life up to 250 hours of welding without turning the pedal on and off.

Easy-Glide Wear Pads™ glide across concrete, making it easy to reposition the pedal for comfort and speed.



Warranted for one year, parts and labor.



Miller Electric Mfg. Co.
An ITW Welding Company
1635 West Spencer Street
P.O. Box 1079
Appleton, WI 54912-1079 USA

Equipment Sales US and Canada
Phone: 866-931-9730
FAX: 800-637-2315
International Phone: 920-735-4554
International FAX: 920-735-4125

MillerWelds.com



Specifications (Subject to change without notice.)

Component	Power Supply	Battery Life	Rated Range*	Temperature	Radio Frequency	RF Power	Antenna	Dimensions	Weight
Foot control (transmitter)	Three AA batteries	250 hours	90 ft. (27.4 m)	-13° to +158°F (-25° to +70°C)	2.4 Ghz (ISM band)	<3mW	Internal	H: 6 in. (152 mm) W: 5.75 in. (146 mm) D: 11.5 in. (292 mm)	3 lb. (1.4 kg) w/batteries
14-pin receiver	10–35 V AC or DC	N/A						D: 3.5 in. (89 mm) Dia: 1.5 in. (38 mm)	0.16 lb. (0.07 kg)

*Some applications are not suitable for wireless communication. Keep in mind that the rated range is subjective, and depends on factors such as obstructions, frequency interference, transmission technology, and weather. The figures listed assume ideal conditions are present.

FCF ID: LW9-Miller-FC (foot control) and LW9-Miller-RX (receiver) Canada IC: 2119B-MillerFC (foot control) and 2119B-MillerRX (receiver)

Recommended Machines

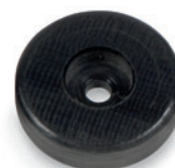
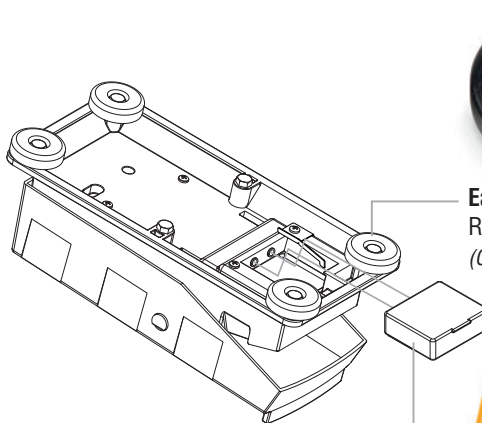
The Wireless Remote Foot Control is recommended for use with the following Miller power sources:

- Dynasty® 210 and 210 DX
- Dynasty® 280 and 280 DX
- Dynasty® 400
- Dynasty® 700
- Maxstar® 161 STL and 161 STH*
- Maxstar® 210 and 210 DX
- Maxstar® 280 and 280 DX
- Maxstar® 400
- Maxstar® 700
- Syncrowave® 250 DX
- Syncrowave® 350 LX
- Trailblazer™ 325

*Adapter cord required. See Ordering Information below.

Note: If your machine is not listed, visit MillerWelds.com/wireless to check compatibility.

Genuine Miller® Parts



Easy-Glide Wear Pad™ 248274
Replacement pads are sold individually.
(Order from Miller Service Parts.)



Battery Box 249297
Replacement quick-change battery box for easy, no-tool battery change.
(Order from Miller Service Parts.)

Ordering Information

Equipment	Stock No.	Description	Qty.	Price
Wireless Foot Control and 14-Pin Receiver	300429	System		
Wireless Foot Control	300724	Sold individually		
Wireless 14-Pin Receiver	300722	Sold individually		
Parts				
Easy-Glide Wear Pad™	248274	Replacement pad sold individually. Order from Miller Service Parts		
Battery Box	249297	Replacement part. Order from Miller Service Parts		
Adapter Cord (for Maxstar 161 STL and 161 STH)	300507	6-pin male, 14-pin female. 1 ft. (0.3 m) long		

Date: _____ Total Quoted Price: _____

Distributed by:

